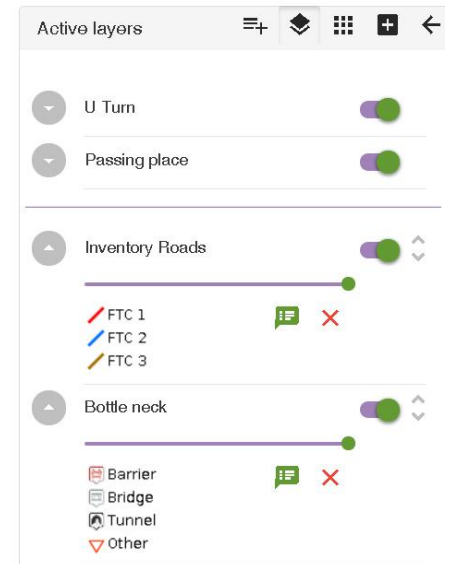
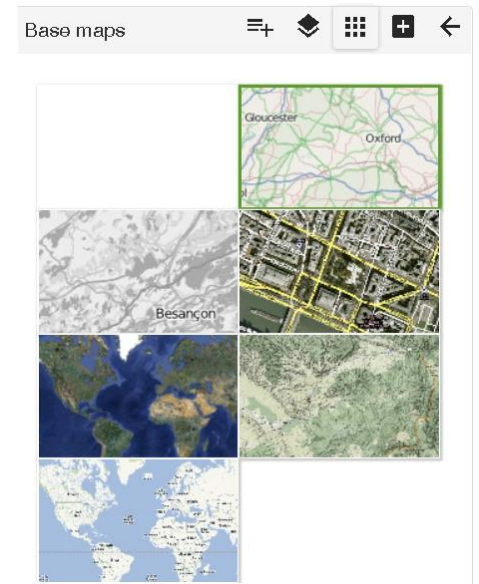
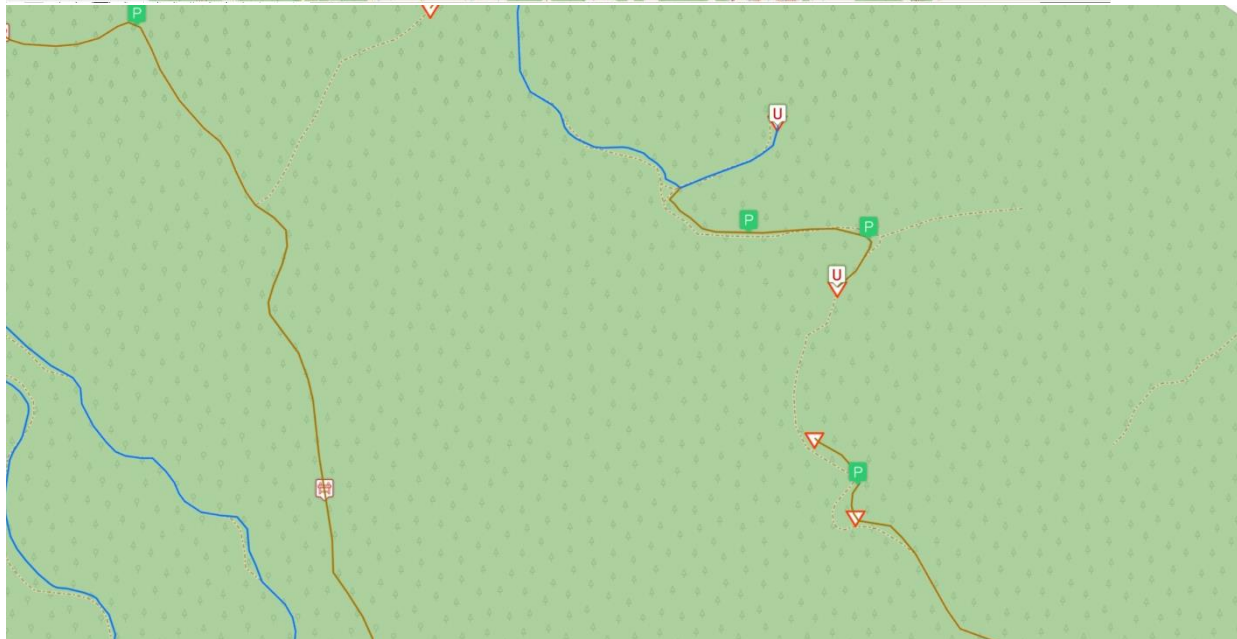
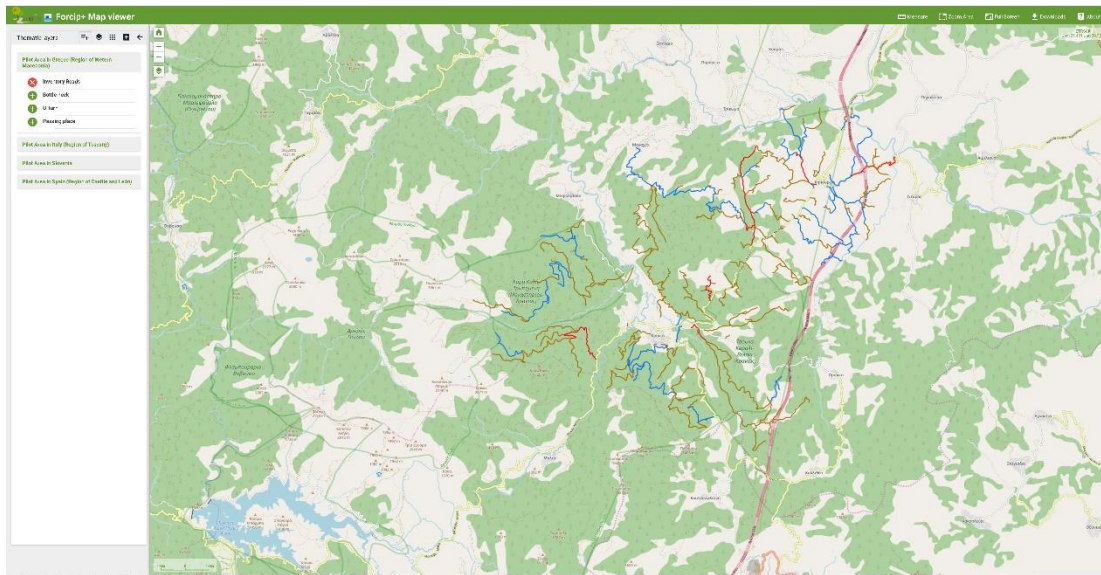




Petros Patias, Charalampos Georgiadis, The Aristotle University of Thessaloniki (AUTH), Greece

DISASTERS SOLUTION PRECURSOR: FORCIP+





FORCIP+ vehicle classification

Vehicle Classification	Maximum Width (m)	Minimum Turning radius (m)	Total Mass (t)
V1 – 1 st order	> 2.5	> 10	> 20
V2 – 2 nd order	2 - 2.5	> 8	3.5 - 20
V3 – 3 rd order	≤ 2	≥ 6	≤ 3.5



FORCIP+ road classification

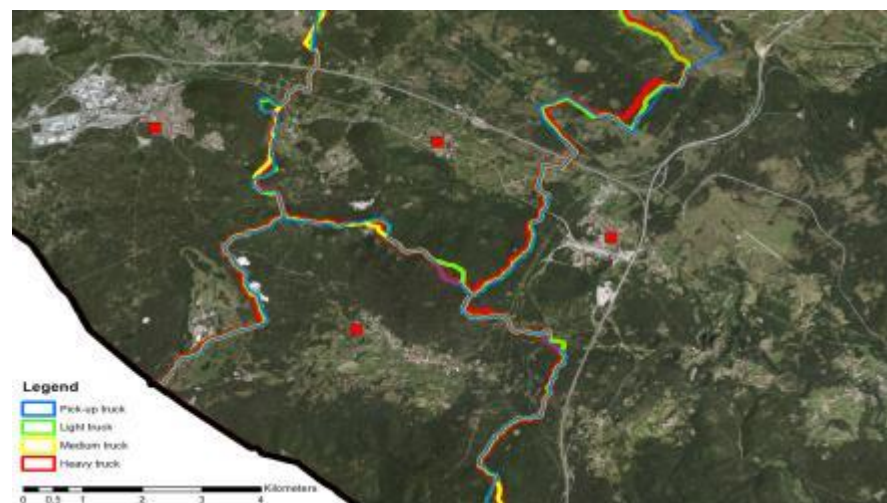
Firefighting traffic capacity	Description
FTC1	This class includes forest roads which can be travelled easily and safely by all kind of firefighting vehicles (gondola included)
FTC2	This class includes forest roads and tracks which can be travelled easily and safely by firefighting vehicles included in VC2 and VC3 classes
FTC3	This class includes forest roads and tracks which can be travelled easily and safely by firefighting vehicles included in VC3 class



Allocation of forest area to nearest resource



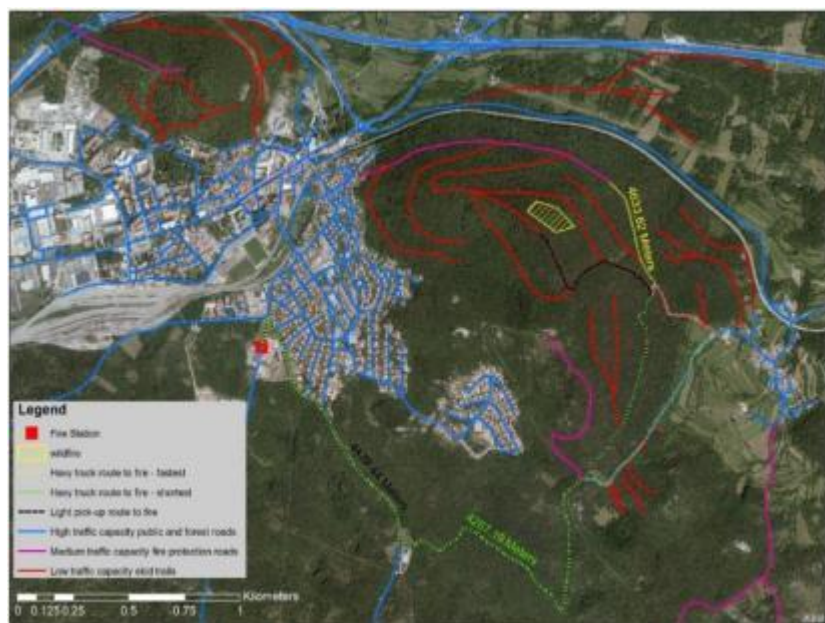
Best waiting positions for first responders



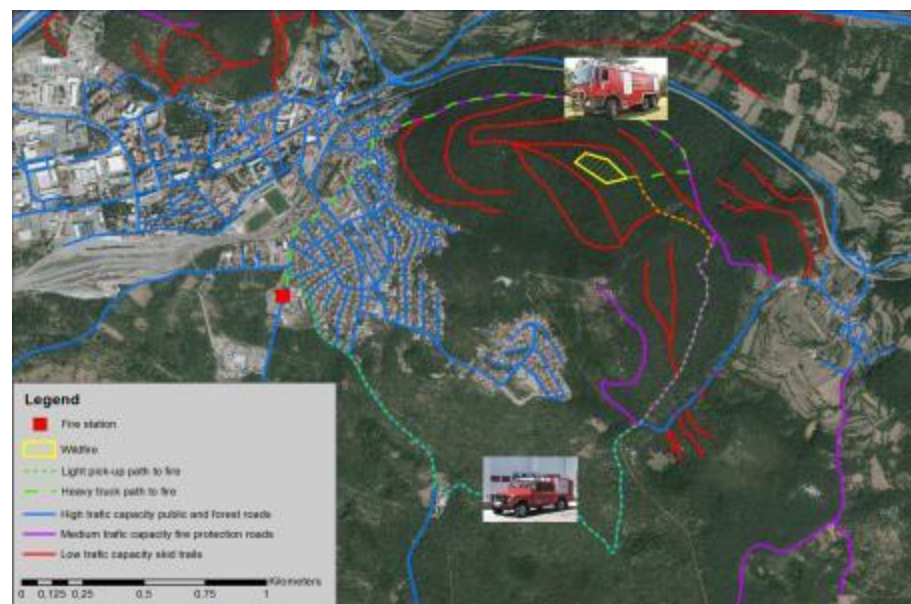
Service area allocations to the firefighting stations, depending on vehicle type



Least cost path and travel time



Example for route optimization calculations



The result of the least cost path analysis is shown for a simulated fire



